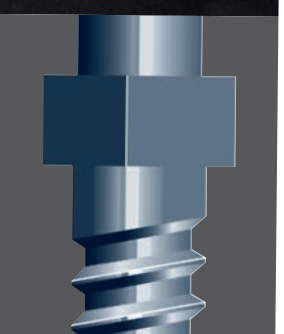
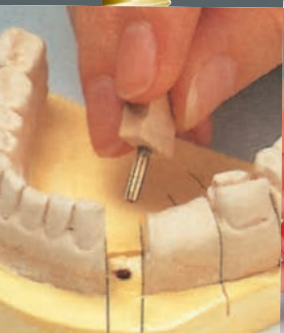
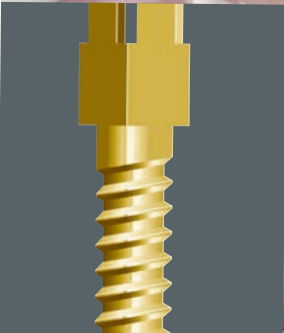
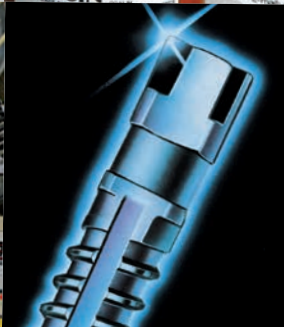
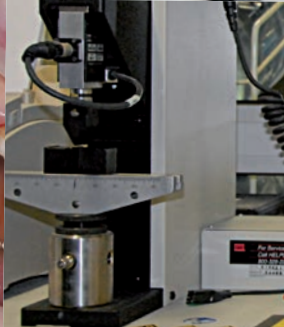
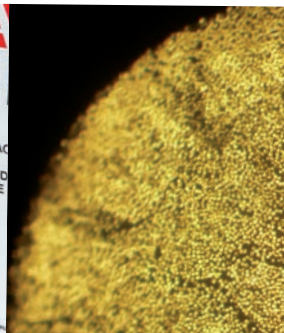


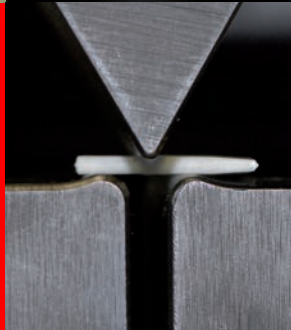
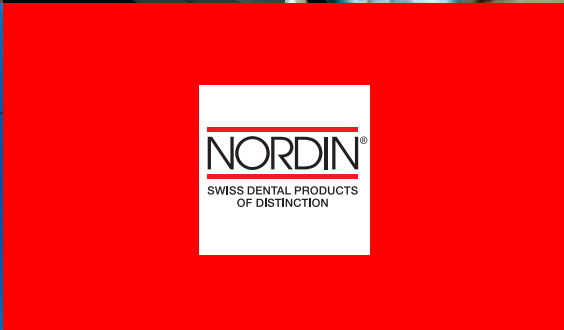
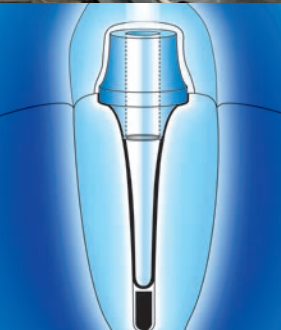
---

**NORDIN**®

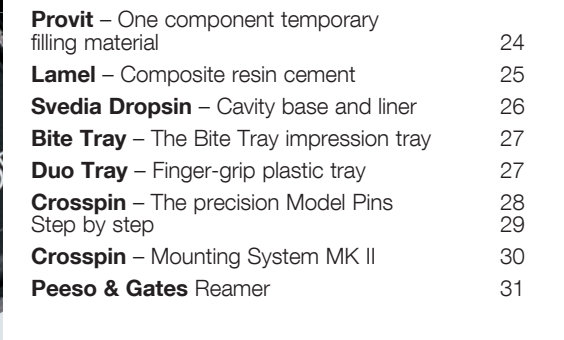
---

SWISS DENTAL PRODUCTS  
OF DISTINCTION



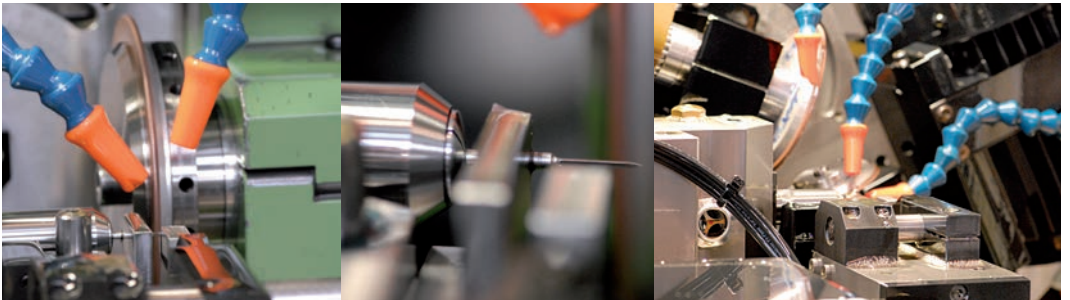


The <b>Nordin</b> Dental Company	4
<b>Glassix+plus</b> – Radiopaque and light transmitting fiber post	6
Clinical case	7
<b>Glassix</b> – Glass fibre composite posts	8
Clinical case	9
<b>UNIC</b> fiber post & core system	10
Clinical case	11-12
<b>Zirix</b> – Zirconium dioxide ceramic post system	13
<b>Carbonite</b> – Carbon fibre composite posts	14
<b>Titanium</b> – Dentine retention pins	15
<b>Screw Posts</b> – The Nordin brand cylindrical Screw Posts	16
<b>Dental</b> – Conically shaped Dental Screw Posts	17
<b>Ancorex</b> – The ultimate titanium post	18-19
<b>Blue Red Radar</b> – Articulating paper	20
<b>Xtra Thin Radar</b> – Articulating paper	21
<b>Corposit</b> – Dual cure core build up and cement for endo posts	22
<b>Shotbond</b> – Self etch DC single mix bonding system	23
<b>Provit</b> – One component temporary filling material	24
<b>Lamel</b> – Composite resin cement	25
<b>Svedia Dropsin</b> – Cavity base and liner	26
<b>Bite Tray</b> – The Bite Tray impression tray	27
<b>Duo Tray</b> – Finger-grip plastic tray	27
<b>Crosspin</b> – The precision Model Pins Step by step	28 29
<b>Crosspin</b> – Mounting System MK II	30
<b>Peeso &amp; Gates</b> Reamer	31





# The NORDIN company





**The NORDIN company as a designer and manufacturer of high quality Swiss Made dental products was founded by Harald Nordin in 1977.**

It now produces a range of distinguished dental products that are distributed in over 80 countries through a network of 200 dealers and importers worldwide.

NORDIN S.A specializes in pins and posts and now has a yearly production of over 25 million pins and posts as well as other dental products.

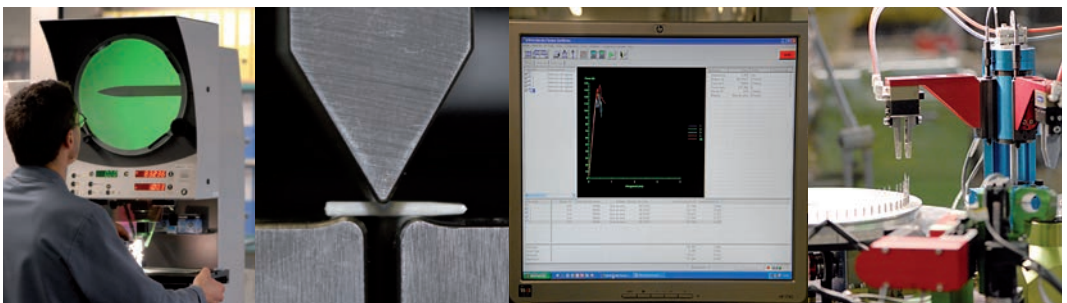
In the early years the company started with the sale and manufacturing of metal posts first only in gold plated brass, stainless steel and ultimately titanium.

Soon emerged a complete line of posts in all available materials.

In the later years the company has led a surge towards non metallic solutions for dental reconstructions.

It resulted in the company now producing a full range of fiber reinforced posts all patent covered. Amongst our latest developments is Glassix plus the latest generation of highly radiopaque and light transmitting fiber posts. Anatomically shaped to fit the root canal. It's the only fiber post with mechanical retention but virtually no points of breakage.

The NORDIN company has many new products and developments up its sleeve and therefore is confidently looking into the future.





# GLASSIX+plus

## Radiopaque & Light transmitting Fiber post

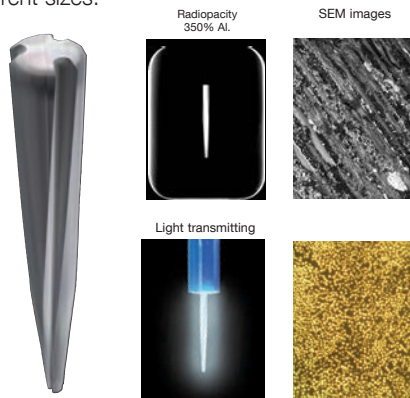
Glassix+plus is the latest generation of highly radiopaque and light transmitting fiber post. Anatomically shaped to fit the root canal (cylindro-conical) with a colour coding for easy identification and mechanical retentions they come in 4 different sizes.

**Indication:**

For corono-radicular reconstructions.

**Advantages:**

- Optimal radiopacity (350%Al.)
- Light conducting for the use of Dual curing resin cements.
- Anatomically shaped with a helicoidal structure - twisted groves - that gives mechanical retention without any breakage points.
- Elasticity close to natural dentine (20 Gpa)
- Enhanced mechanical properties (1600Mpa)
- Aesthetic thanks to its translucent matrix.
- 100% biocompatible- epoxy free.



02-300



**GLASSIX+plus** is supplied in a kit with  
4x5 Glassix +plus  
+ 4x1 Reamer  
+ 1 Pilot Reamer

02-301



**GLASSIX+plus** is also available in refills of 10 pcs each size.

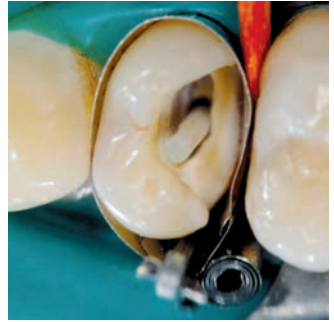
- Glassix +plus Refill No. 1: Ø 1.2 - Ø 0.6 mm.
- Glassix +plus Refill No. 2: Ø 1.5 - Ø 0.8 mm.
- Glassix +plus Refill No. 3: Ø 1.8 - Ø 0.9 mm.
- Glassix +plus Refill No. 4: Ø 2.0 - Ø 1.0 mm.



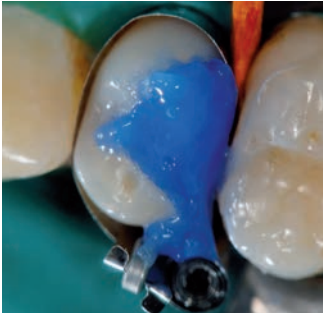
1. After completed endo treatment, open canal with pilot reamer.



2. Calibrate canal with Glassix + plus reamer.



3. Insert post for fit.



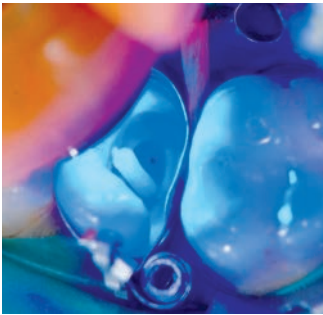
4. Etching.



5. Dry with paper points.



6. Apply layer of bonding.



7. Insert post, cement and light cure.



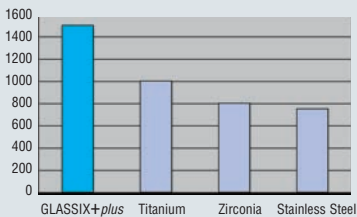
8. Post is cemented and build up started.



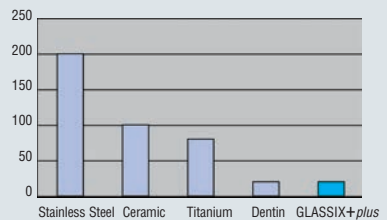
9. Finished work.

Images by Dr. Nicolas Bois  
 Informations provided by NORDIN SA

**Diametrical Tensile Strength (Mpa)**



**Young's Modulus of Elasticity (Gpa)**



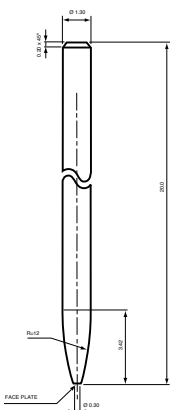
# GLASSIX®

GLASS FIBRE COMPOSITE POSTS

## The radiopaque fiber post



02-001



The radiopaque fiber post. The glass fibre will prevent the post from breaking and makes it very resilient and it will not like a hard and numb metal post transmit stress and shock to the dentine. It will work together with the dentine to absorb any stress or shock as it has about the same elasticity as the dentine itself. The composite will form a bond with a resin cement and the composite used for build-up. The **GLASSIX** posts are available in 4 different selected diameters (the most used) and in a cylindrical shape with a gentle rounded cone ideal for the root-canal and exactly matched by the calibrated reamers.

The **GLASSIX** posts are long (they are easily shortened) so you can always let the post go all the way to the top of your build-up and cut off the extra length when you trim the build-up, thus ensuring maximum bond and strength to the reconstruction.

Glassix is radio-opaque, allowing fast recognition on the X-Ray.



Glass fibre as a braided plait in a multi-axial arrangement giving better resistance to bending and torsion forces than fibres in an ordinary axially parallel arrangement.

**Glass fibre arrangement:** braided plait – **Braid:** 12 Roving 136tex – **Ø of filament:** 6 my. **Glass fibre type:** ahlstrom R-338 – **Matrix:** Epoxy resin with apx. 65 % glass fibre content. Int'l. PATENTS pending.



The outstanding feature of Glassix is that it has an esthetically pleasing tooth-color which will blend with and not show through the composite restoration.



**GLASSIX** is supplied in a kit with 18 posts and 3 reamers in sizes:  
No. 2 - Ø 1.20 No. 3 - Ø 1.35  
No. 4 - Ø 1.50

**GLASSIX** is also available in refills of 6 pcs each size.  
No. 1 - Ø 1.00 No. 2 - Ø 1.20  
No. 3 - Ø 1.35 No. 4 - Ø 1.50



**Refill remears:** individually.



## Replacement of an old bridge and reinforcement of cores using Lamel® composite resin cement and Glassix®, glass fibre reinforced composite post.

By Dr. Björn Oscarsson. Information provided by Nordin S.A.

The patient, a middle-aged woman presents an old bridge (gold and ceramic) on 23,24,25,26. The bridge is anchored on 23 and 25. It is dislodged and discoloured. The old bridge is sectioned and removed. Cores on 23 and 25 are exposed and are endodontically treated but have no post reinforcement. 25 is badly discoloured (black) probably by a previous amalgam restoration. (Fig. 1)



Fig. 1. Old bridge 23,24,25,26 is removed



Fig. 2. Standard Gates reamer N° 3 is used to open up canal.



Fig. 3. Calibrated Glassix® reamer is used to adapt shape and size of canal to selected Glassix® post.



Fig. 4. Glassix® post is tested to fit in prepared canal.



Fig. 5. Lamel® composite resin cement is injected with disposable auto mix tip directly into the root canal.



Fig. 6. Glassix® post placed in root canal and cemented.



Fig. 7. Core build up composite in a core form placed over shortened Glassix® post.



Fig. 8. Cores ready for impression and new bridge.

- Both canals in 23 and 25 are opened using a standard Gates reamer N° 3. (Fig. 2)
- The root canals are adapted using a **Glassix®** reamer calibrated to fit the shape, size and diameter of the selected **Glassix®** glass fibre post. (Fig. 3)
- The root canal is cleaned and can be etched with a 37% phosphoric acid gel (this is optional as the cement (Lamel® composite resin cement) to be used has good retention to canal wall by itself).
- Selected **Glassix®** glass fibre posts are tried in root canal to check that fit is correct. (Fig. 4)
- It is decided to shorten **Glassix®** posts only after cementation as the longer posts are easier to insert into root canal.
- Lamel®** composite resin cement is inserted directly into canal using its disposable auto mix tip (**Lamel®** requires no mixing on slab nor does it require any bonding or any other accessories as it has a perfect bond by itself). (Fig. 5)
- Some **Lamel®** is also applied to post which is then inserted.
- Glassix®** posts are inserted in root canal with **Lamel®** resin cement let to set (setting time 3-5 minutes). (Fig. 6)
- When **Lamel®** is fully set the posts are shortened to desired length with a diamond bur.
- If posts are already in the desired length core build up material can be applied without waiting for **Lamel®** to be fully set (the two composite materials will bond together).
- Excess **Lamel®** cement is removed and some etchant (37% phosphoric acid in gel) is applied to dentine next to post to allow core build up to bond to the tooth.
- Core build up composite is placed in a core form which is placed over 23 and core build up material is light activated. (Fig. 7)
- Core 25 has sufficient tooth substance and some **Lamel®** left and therefore requires no special core build up material.
- When cores are set the core form is removed and adjusting preparations are made on cores with a diamond burr.
- Cores are now ready for impression and a new bridge in porcelain fused to gold will be made and fitted. (Fig. 8)



# unic®

## Radiopaque, light transmitting fiber post & core system



- Radiopaque, light transmitting fiber post & core system
- Hyperboloidal shape for ultimate fit, absorption and distribution of stress.
- No breakage point.
- Easy access to root canal through core.
- Minimal removal of dentine.
- Optimal radiopacity (350-400%Al.)
- Core and post structure are light conducting.
- Elasticity close to natural dentine (20 Gpa)
- 100% biocompatible-epoxy free

INT. PATENTS.



### Packing:

UNIC kit is available with 3\*5 cores, 3\*5 posts, 3\*1 drills, 3\*1 reamers

### Sizes:

Core #1: Ø 3mm  
 Core #2: Ø 4mm  
 Core #3: Ø 5mm

Post #1: Ø 1.25mm - Ø 0.8mm  
 Post #2: Ø 1.5 mm - Ø 0.9mm  
 Post #3: Ø 1.8 mm - Ø 1.0 mm

Refills: 10 cores

Refills: 10 posts

02-400



1.



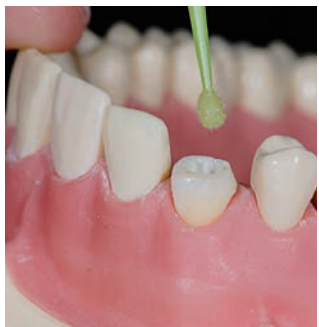
2. calibrate the upper section of root with UNIC® counter sinking instrument (drill)



3. check UNIC® core for fit, then cement



4. apply SHOTBOND® using the micro applicator



5. apply SHOTBOND®



6. cement the core using CORPOSIT®



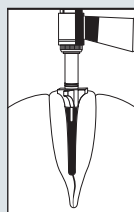
7. place UNIC® core



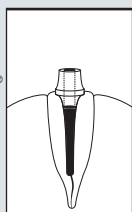
8. light cure



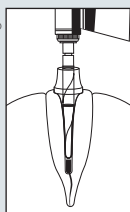
9. trim UNIC® core



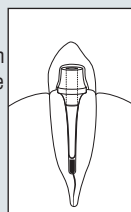
1. Calibrate the upper part of root with UNIC® counter sinking instrument (drill).



2. Check UNIC® core for fit then cement.



3. Use UNIC® reamer through UNIC® core hole to open canal.



4. Check UNIC® post for fit and cement. Trim the UNIC® core and post if necessary.



10. temporary crown



11. temporary crown



12. endo



13. use UNIC® reamer through UNIC® core hole to open canal and calibrate



14. UNIC® post



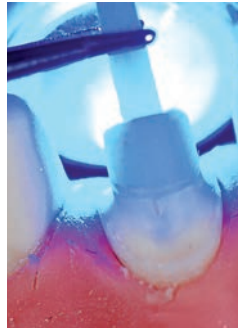
15. try UNIC® post for fit



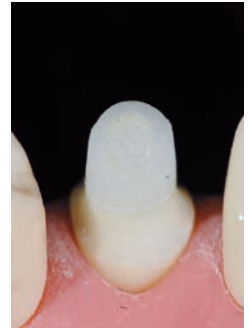
16. use SHOTBOND® to optimize bonding



17. CORPOSIT® in canal through UNIC® core hole



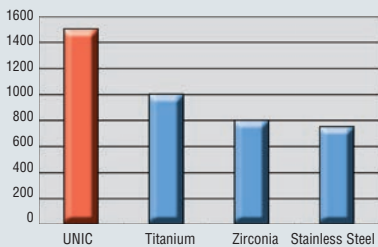
18. insert UNIC® post and light cure



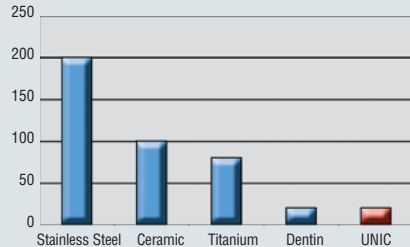
19. trim post, finished work

Images courtesy of Dr. Bois

**Diometrical Tensile Strength (Mpa)**



**Young's Modulus of Elasticity (Gpa)**

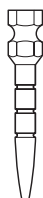




01-001

# ZIRIX®

## Zirconium dioxide ceramic post system



**Zirix** is a ceramic post system in a remarkable material ( $ZrO_2$ ).

Zirconium dioxide is a hard and withstanding ceramic but it has a certain flexibility and the most remarkable capacity to heal any crack that might occur by molecular action and it is 100 % biocompatible.

**Zirix** is the only ceramic post system with a shape including anti-rotation devices and retention slots on both head and bottom part.

**Zirix** is also surface treated to create extra micro retention.

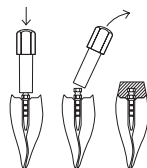
**Zirix** is supplied with a special colour coded disposable insertion handle.

**Zirix** is supplied in 6 sizes with calibrated reamers.

**Zirix** can be cemented with any cement of your choice and you can use any core material you wish.

The ceramic material zirconium dioxide has for many years been used in dentistry for inlays, crowns and bridges, in particular when using computer controlled grinding machines to make these.

Zirconium dioxide has some outstanding properties. It has of course the bio compatibility and non corrosive qualities of all ceramics. In addition to this zirconium dioxide is not a brittle material, like most other ceramics, but has a certain resilience and does not easily break. It is even said to be able to heal a crack in the material by molecular action. Our Zirix posts are the only zirconium posts with retention slots on the bottom part and around the head. We also have two flat sides on the bottom part to avoid any rotary movement. The head is octagonal to avoid any rotary movement of the built-up. Zirix is supplied with a simple disposable insertion colour coded key mounted on every post. Just insert the post, twist key sideways and it comes off.



**ZIRIX** is supplied in a kit with 6 x 3 posts and 4 reamers in sizes:

- Ø 1.10 S 2
- Ø 1.25 S 3 - M 3
- Ø 1.35 M 4 - L 4
- Ø 1.50 L 5

**ZIRIX** is also available in refills of 3 pcs each size.

**Reamers refill:** individually.

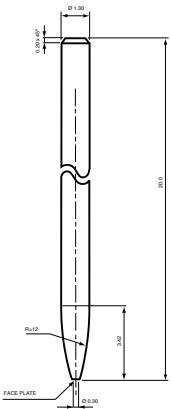


# CARBONITE®

CARBON FIBRE COMPOSITE POSTS

Strong resilient bundles of carbon fibre bound with composite

02-100



The carbon fibre will prevent the post from breaking and makes it very resilient and it will not like a hard and numb metal post transmit stress and shock to the dentine. It will work together with the dentine to absorb any stress or shock as it has about the same elasticity as the dentine itself. The composite will form a bond with a resin cement and the composite used for build-up.

The **Carbonite** posts are available in 3 different selected diameters (the most used) and in a cylindrical shape with a gentle rounded cone ideal for the root-canal and exactly matched by the calibrated reamers.

The **Carbonite** posts are long (they are easily shortened) so you can always let the post go all the way to the top of your build-up and cut off the extra length when you trim the build-up, thus ensuring maximum bond and strength to the reconstruction.

Carbon fibre as a braided plait in a multi-axial arrangement giving better resistance to bending and torsion forces than fibres in an ordinary axially parallel arrangement.

Carbon fibre arrangement: braided plait – Braid: 12 bundles of 3K Flowing (30000 filaments)

– Ø of filament: 6 µm – Carbon fibre type: HTA / HTS

Matrix: Epoxy resin with apx. 65 % Carbon fibre content.

Intl. PATENTS pending.



## CARBONITE

is supplied in a kit with 18 posts and 3 reamers in sizes:  
No. 2 - Ø 1.20  
No. 3 - Ø 1.35  
No. 4 - Ø 1.50



## CARBONITE

is also available in refills of 6 pcs each size.  
No. 1 - Ø 1.00  
No. 2 - Ø 1.20  
No. 3 - Ø 1.35  
No. 4 - Ø 1.50



**Refill remears:** individually.



## Titanium Dentine Retention Pins



Drill hole in dentine where pin retention is desired avoiding closeness to pulp and outside of tooth.



Insert shaft of pin in standard contra angle.



Put point of pin at appropriate R.P.M. to pre-drilled hole and pin will center into and penetrate to the bottom and automatically break off from shank.



Pin can be bent with appropriate instruments if increased retention is desired.

- **Non corrosive titanium**
- **No stress**
- **Soft-shearing**
- **Self-centering**
- **Smooth-cutting**
- **Maximum retention**
- **Cut from solid rod**
- **Superior stability**

Titanium is tissue compatible and has no corrosion or galvanic reaction associated with other metals.

These retention pins are not merely a threaded wire pushed into a shaft, but they are machined out of a solid rod of premium pure titanium with a Swiss watch precision cut thread, which is smooth-cutting and giving maximum of retention. They also have a self soft-shearing shaft, shearing without causing unnecessary stress to the dentine.

Part of the original solid rod of titanium is precision molded into the shank for greater stability.

The Nordin Titanium Pins are also available in a blue Dental Brand packaging.



06-001

The retention pins are supplied in handy 12-packs with 1 drill, in diameters 0.75 mm (medium) or 0.60 mm (small), and in a bulk pack of 100 pcs + 4 drills, 0.75 mm or 0.60 mm.

Kit box:  
12 pins + 1 drill  
Ø 0,60 mm or Ø 0,75 mm.

Bulk pack:  
100 pins + 4 drills  
Ø 0,60 mm or Ø 0,75 mm.



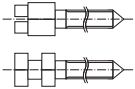
**NORDIN®**

**Screw Posts**

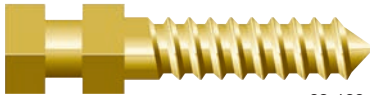
All Nordin brand Screw Posts are cylindrical and available in:



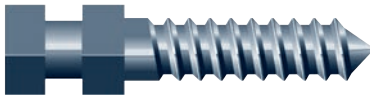
**Cylindrical**  
Cross head



03-001



03-100



03-200

**NORDIN Golden** cylindrical gold plated screw posts with head for Cross Key.

**NORDIN Golden** Composite cylindrical gold plated screw posts with special composite head slot for increased mechanical retention.

**NORDIN Titanium** cylindrical titanium screw posts with composite head for increased retention in build up material.

All the NORDIN Screw Posts come in the same sizes and numbers as the Dental brand screw posts.



**Assortment 60**

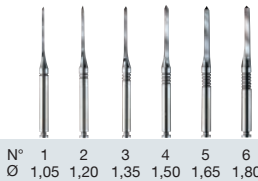
Assorted box with 3 screw posts each size  
60 screw posts, 1 hollow key

**Assortment 120**

Assorted box with 6 screw posts each size  
120 screw posts, 1 hollow key

**Assortment 240**

Assorted box with 12 screw posts each size  
240 screw posts, 1 hollow key



N° 1 2 3 4 5 6  
Ø 1,05 1,20 1,35 1,50 1,65 1,80

**Refill with 12 screw posts**

All screw posts the same size N° 1, 2, 3, 4, 5, 6. S/short M/medium L/long XL/extra long only N° 4 & 6


**Reamers assortment**

S 1-6 short, assortment of 6 pcs  
L 1-6 long, assortment of 6 pcs

**Reamers refill**

3 pcs all the same size

 Cross key

 Hollow key

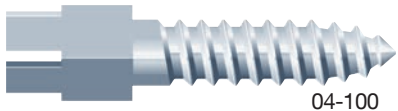
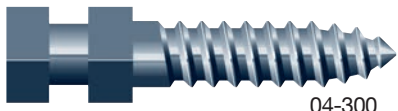
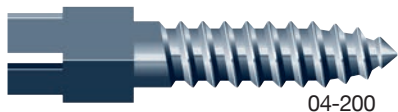
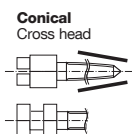
Size	1	2	3	4	5	6	
S	•	•	•	•	•	•	Short 8 mm
M	•	•	•	•	•	•	Medium 9,5 mm
L	•	•	•	•	•	•	Long 12 mm
XL				•	•		Extra long 14 mm





# Dental Screw Posts

Conically shaped Dental Screw Posts are available in:



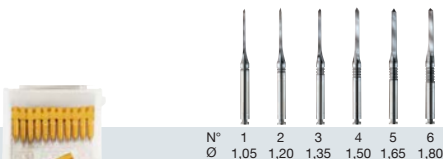
**Dental Titanium cross head:** Once again same shape and number but in strong 99.8 % pure titanium, which is tissue compatible and is the metal mostly recommended for human implants.

**Dental Titanium composite head:** The titanium dental post in titanium with a composite head provides increased mechanical retention in the composite build up material (only use Nordin hollow key).

Also this post comes in the same sizes, shapes and numbers as the other Dental brand posts.

**Dental Gold Plated cross head:** High quality precision finish in a special lead free alloy, conical shaped. Thread made similar to that of a modern self-tapping screw. Gold plated screw posts electrolytically plated with a thick layer of 24 K gold.

**Dental Stainless Steel cross head:** Same shape and number as the gold plated but in strong resilient non corrosive surgical quality stainless steel.



**Assortment 60**

Assorted box with 3 screw posts each size 60 screw posts, 1 hollow key, 1 cross key

**Assortment 120**

Assorted box with 6 posts each size 120 screw posts, 1 hollow key, 1 cross key

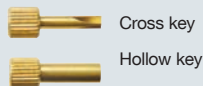
**Assortment 240**

Assorted box with 12 posts each size 240 screw posts, 1 hollow key, 1 cross key

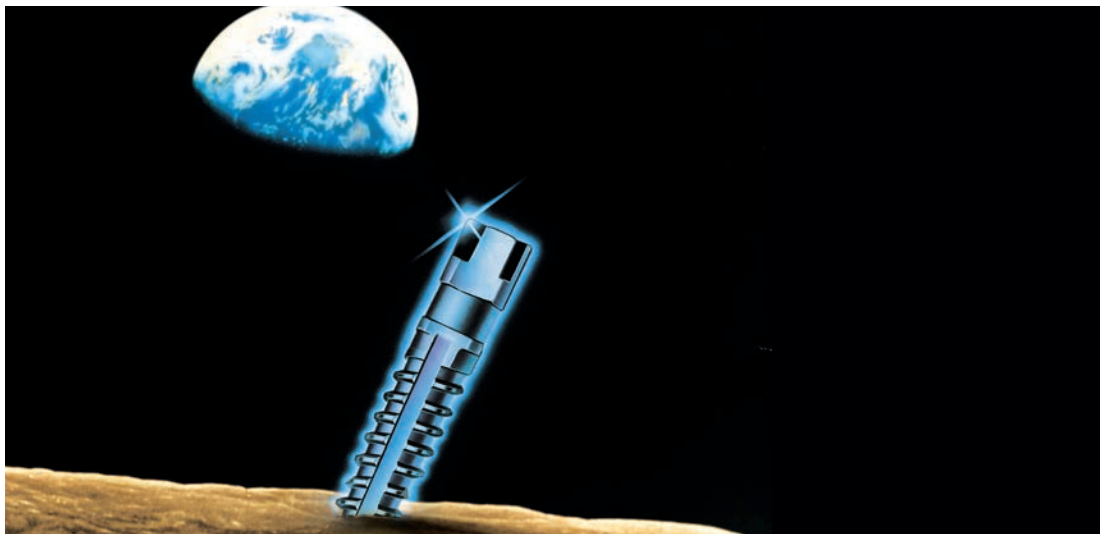
**Refill with 6 screws posts**  
All screw posts the same size N° 1, 2, 3, 4, 5, 6. S/short M/medium L/long XL/extra long only N° 4 & 6

**Reamers assortment**  
S 1-6 short, assortment of 6 pcs  
L 1-6 long, assortment of 6 pcs

**Reamers refill**  
3 pcs all the same size



Size	1	2	3	4	5	6	
S	•	•	•	•	•	•	Short 8 mm
M	•	•	•	•	•	•	Medium 9,5 mm
L	•	•	•	•	•	•	Long 12 mm
XL				•		•	Extra long 14 mm
Ø	1,05	1,20	1,35	1,50	1,65	1,80	Dimensions

**Material:**

Pure titanium 99,6% (specification: 99,6% Ti, 0.03% N<sub>2</sub>, 0.10% C, 0.013% H<sub>2</sub>, 0.05% Fe, 0.20% O<sub>2</sub>). Titanium has no chemical reaction, no corrosion and is light in weight, yet very strong. Titanium is absolutely tissue compatible and is the metal mostly recommended for human implants.

**Shape:**

Cylindrical-conical.  $\frac{2}{3}$  of length absolutely cylindrical for best retention,  $\frac{1}{3}$  of length 3° conical to avoid stress in the apex area of the root.

**Special thread:**

Thread designed to give mechanical retention in the dentine when screwed in or to give retention in the cement if post is cemented.

**Head design:**

Slot around head to provide mechanical retention to build-up material composite

or amalgam. Head also has cross cut to make use of handy cross key.

**Evacuation slot:**

Slot along threaded part to allow escape of excess cement which might otherwise cause pressure in the apex.

**Double use:**

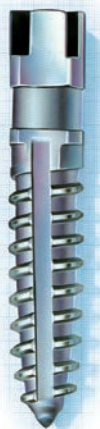
Can be used as a cemented post or as a screwed in post.

**20 sizes:**

Always the right size for every possible case.

**Calibrated reamers:**

Posts come in thickness sizes 1-6. Reamers assorted 1-7. If post is to be screwed in, use reamer of same number as post. If post is to be cemented, use reamer one number larger than post.



05-001

**Ancorex Kit**

Assorted box with 5 posts each size – 100 posts, 1 hollow key, 1 cross key  
Assorted box of reamers S 1-7  
Reamers-Stand N° 1-7

**Assortment**

Assorted box with 5 posts each size – 100 screws, 1 hollow key, 1 cross key

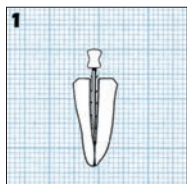
**Refill with 10 posts**

All posts the same size  
N° 1, 2, 3, 4, 5, 6  
S/short M/medium  
L/long XL/extra long  
only N° 4 & 6

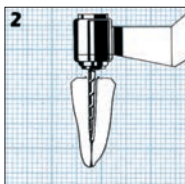


# ANCOREX®

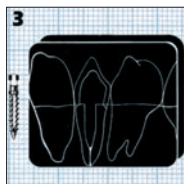
## Ancorex®, the ultimate titanium post



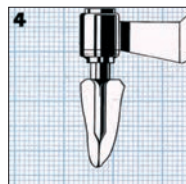
1 Prepare rootcanal endodontically as usual.



2 Use spiral cut bur to open up rootcanal.

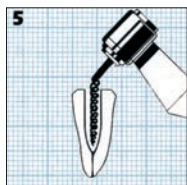


3 Select appropriate size of Ancorex post according to X-ray.

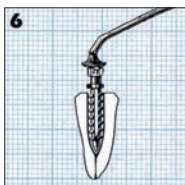


4 Prepare rootcanal with Ancorex reamer:

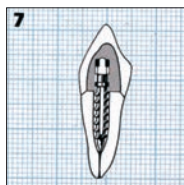
- a) if post is to be screwed in, use same reamer number as post (i.e. 2-2, 4-4, etc.)
- b) if post is to be cemented, use reamer one number above post number (i.e. 2-3, 4-5, etc.).



5 Dip post into cement; only slightly if to be screwed in. If post is to be cemented, use paste filler spiral to rotate cement down into rootcanal, insert post and keep it in place for about 2 minutes.



6 If build-up is to be made with composite material, paint composite Enamel Bond on the head of the Ancorex post to increase retention in build-up material. Ancorex post head is sandblasted to provide retention with enamel bond.



7 Make build-up of crown core in amalgam or composite and prepare for crown.

### Reamers assortment

S 1-7 short, assortment of 7 pcs

pcs

L 1-7 long, assortment of 7 pcs

### Reamers refill

3 pcs reamers  
all the same size



Cross key



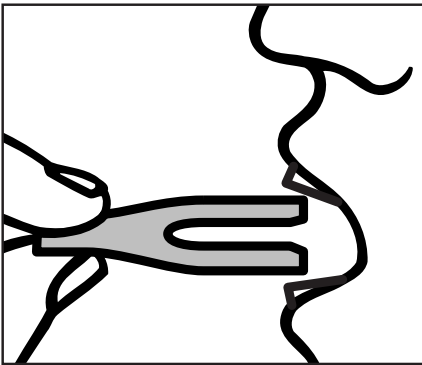
Hollow key

Size	1	2	3	4	5	6	
S	•	•	•	•	•	•	Short 8 mm
M	•	•	•	•	•	•	Medium 9,5 mm
L	•	•	•	•	•	•	Long 12 mm
XL				•		•	Extra long 14 mm
Ø	1,05	1,20	1,35	1,50	1,65	1,80	Dimensions



**BLUE** ●●  
**RED**  
**RADAR**

Blue Red Radar  
Articulating Paper  
**65 μ**



**Radar Articulating Paper**

Extra sensitive articulating paper for correct bite control.

**Blue/Red Radar**

Blue and red on the same paper for rapid double checking. Anatomically shaped, horseshoe or curved with uncoloured thumb-grip.

**Blue/Blue Radar**

Both sides coloured blue. The rest the same as Blue/Red Radar.

**Articulating Paper 65 μ**

07-002



Blue/blue "Horseshoe"

07-001



Blue/blue Curved

07-004



Blue/red "Horseshoe"

07-003



Blue/red Curved

**Packing:** 6 bundles "Horseshoe" of 12 sheets 12 bundles curved of 12 sheets



XTRA XTRA XTRA  
THIN  
RADAR

## XXX Thin Blue Red Radar Articulating Paper 40 $\mu$

Blue Red Radar articulating paper is now also available in Xtra Xtra Xtra thin.

**40  $\mu$  thickness guarantees** absolute pin-point precision in marking any high spot, occlusion and articulation.

This paper also give **better markings** in the humid environment of the patients mouth.

XXX thin Radar retain the full arch horse-shoe shape and half arch curved shape

and the double quality of blue colour on one side and red on the other side and the non-smear clean grip, which is uncoloured, just like the Blue Red Radar classic.

- XXX thin paper superior precision
- Better marking in «the wet»
- Popular shapes and colours

### Articulating Paper 40 $\mu$

07-011



Blue/red "Horseshoe"

07-010



Blue/red Curved

#### Packing:

- 6 bundles "Horseshoe" of 12 sheets
- 12 bundles curved of 12 sheets



# CORPOSIT®

## Dual cure core build up and cement for endo posts



### The dual curing radiopaque core build up and composite cement for endo posts.

- Dual curing for fast and flexible setting; 40 sec. light cure, 3 minutes self cure.
- **Same** material for post cementation and core build up helps to reduce chair side time and expenses
- Optimal flow properties
- Intraoral tip for precise, bubble free application
- Cuts like dentine
- **Superior adhesive and mechanical properties**
- **Compressive strength 342 Mpa**
- **Adhesion to dentine 26 Mpa**
- **Optimal bonding properties to Glassix plus fiber post 34Mpa\***

\*internal data, when used with Shotbond®



CORPOSIT

### Packing:

2x6 gr Syringes,  
10 tips ,  
10 intra oral tips



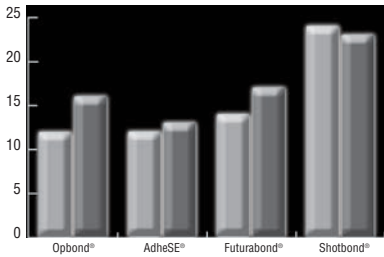
# shotbond®

Self etch DC single mix bonding system



## The self etch dual curing single mix bonding system

- 7th generation all in one bonding system
- Single dose etching, primer, bonding
- Ease of use, simple, hygienic
- High adhesion values on enamel ( 24 Mpa\*) and dentine (23 Mpa\*)
- No post operative sensitivity no spilling, no additional devices required



\*source internal data when light cured 20 sec.

■ adhesion to enamel Mpa  
■ adhesion to dentine Mpa



SHOTBOND

**Packing:**

35x0.15ml doses and  
35 micro applicators

07-140



# provit

One component  
temporary  
filling material

**ProvIt**, the ideal temporary filling material, is ready to use and does not have to be mixed.

**ProvIt** is a safe material based on resins and has no harmful effect on the pulp.

**ProvIt** is soft when applied and thus avoids compression.

**ProvIt** hardens rapidly in the cavity in the presence of saliva.

**ProvIt** has excellent stability in the mouth, and provides a hermetic sealing of the cavity margins.

**ProvIt** will not harden in the jar.

## Directions for use:

Take out the quantity of the product required and then be sure to close completely.

In the case of especially exposed cavities, allow a few minutes for the hardening of the product placed in the cavity.



07-100

**ProvIt is obtainable** in box of 6 jars each 28 g.

## Contains:

Zinc oxide  
Plaster  
Zinc sulphate  
Potassium sulphate  
Methacrylic complex





**Lamel®**

COMPOSITE RESIN CEMENT

## Lamel® composite bonding cement

**Lamel® is a composite bonding cement in a two-chamber syringe custom-developed for cementing fibre-reinforced posts.**

There is no need for primer or bonding agent with Lamel®. The material is applied directly to the clean composite post. In addition, the material can be injected into the prepared root canal. Place the composite post into the canal and hold in position for 20 – 30 seconds. Lamel® ensures a strong

bond between the composite and the post, as well as to the sides of the root canal. It is sometimes helpful to lightly abrade the root canal surface for added mechanical retention.



Of course, Lamel® is also suitable for most other indications where composite cement is used.



07-120

Lamel is supplied in a kit with 1 syringe 6 g + 10 Tips

Tips available separately



**SVEDIA**  
**DROPSIN**  
CAVITY BASE AND LINER

## Dropsin® Cavity base and liner

**DROPSIN** is a compound of minerals selected for their protective and adhesive properties. The main components are zinc oxide, calcium hydroxide, aluminium hydroxide, magnesium oxide, etc.

**DROPSIN** powder and liquid should be mixed to a creamy consistency and «dropped» into the cavity by means of an explorer, excavator or small burnisher. It adheres to tooth structure instantly on contact, even if moisture is present.

**DROPSIN** sets hard enough in 1 to 1,5 minutes to permit packing of an amalgam obturation. Whether the cavity is deep or shallow, easy to reach or in an awkward hard-to-keep-dry gingival position, there is never a problem to make **DROPSIN** stay in place.

**NO STICKING** to instruments. If a cavity's margin becomes accidentally covered by the mixture, cleaning will not cause unintentional removal of the actual cavity lining.

**EASY HANDLING** combined with greatest economy.

**A BIOLOGICALLY HARMONIOUS PROTECTION and leakproof lining in one unique product.**

**DROPSIN** seals the dentinal tubuli instantly and when set represents an inert mineral providing a perfect chemical and thermal barrier under silicate, acrylic, amalgam and composite obturations.

**DROPSIN** is unequaled for sealing off medications of any kind including surgical packs containing oils. Some practitioners use it in combination with iodoform or antibiotics for special effects.

**DROPSIN** has been used by itself for many years with complete safety in cases where phosphate cements are contraindicated because of too close a proximity to the pulp or even near-exposures.

In preparing crowns or inlays, **DROPSIN** has been of incalculable value to the profession. If for instance during the procedure a piece of enamel is chipped off, a quick mix of **DROPSIN** restores the contour promptly and work can proceed normally. When the impression is taken, the **DROPSIN** «repair» will stay intact at the place it was applied.

**DROPSIN** can also be used successfully for protecting broken off incisal edges for a certain time. The mix is radiopaque and near colourless and will, therefore, not cause any discoloration in anterior teeth even under thinnest enamel layer.



**DROPSIN** is supplied in a kit with 45 g powder and 15 cc liquid

**LIQUID:** available separately

07-110

# BITE TRAYS

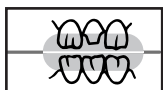
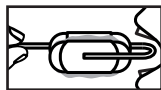


## The Bite Tray impression tray and holder

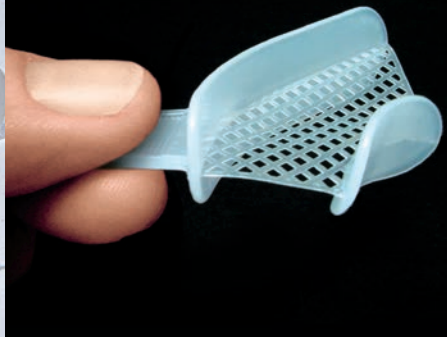
The Bite Tray impression tray made of cardboard and gauge is ideal for all bite impressions and for impression of single crown or inlay preparations giving an impression of the preparation of the teeth next to it and the bite against it.

Most standard impression materials are suitable for the Bite Tray. The new stainless steel **Holder for Bite Trays** will greatly facilitate the insertion of the Bite Tray in the mouth.

The Holder will stabilize the Bite Tray and produce a better and more precise impression.



# DUO TRAY



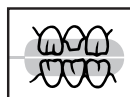
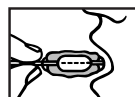
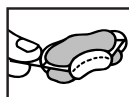
## Finger-grip plastic tray

Finger-grip plastic tray for all partial impressions.

Suitable for impressions of the upper and lower jaw simultaneously.

Duo Tray is the ideal disposable partial impression tray for all small partial impressions giving an impression of the preparation and the bite against it on one go.

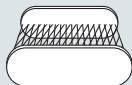
Duo Tray is anatomically shaped  $\frac{2}{3}$  straight and  $\frac{1}{3}$  curved and will fit anywhere in the mouth. Duo Tray has a plastic handle for easy handling.



**Packing:**  
Box of 50 straight

07-210

Straight



**Packing:**  
Bag of 50 trays

07-200



**Packing:**  
Bag of 4 pcs

07-212



**crosspin**®

## Precision Model Pins make all Dental Model-work easier

**Crosspin**® developed by Harald Nordin SA does improve precision and facilitate work with removable model sections.

**Unique:** allows easy removal of model section to be worked upon and makes repositioning with absolute precision possible.

**Advantage:** simplifies work for the dental Technician and offers absolute precision.

**Crosspin**® has a double profile; a cylindrical part which is introduced in the “tooth part” of the model and a cross-shaped part which with its sleeve is introduced in the “base part” of the model. The sleeve will stay in the base part and the desired section can thus be removed and replaced with absolute precision.

**With Crosspin**® you will save time, gain precision and increase the quality of your final work:

- The removable section can always, after multiple removals, be returned to its initial position with absolute precision.
- You only need one pin per section.
- The depth of the model-former (to cast the base) is adapted to the length of the pins so you will have direct access to the bottom of the pins from the bottom of the base which makes extraction much easier.
- The base is already shaped and needs no trimming.
- You will also use much less plaster and have a thinner model which is easier to mount in the articulator.
- Finally, a better job made easier with more precision and less cost. Swiss Quality signed **Harald Nordin SA**.



08-001

**Crosspin**® kit:

250 pins and sleeves  
1 drill  
2 model-former

**Crosspin**® refills:

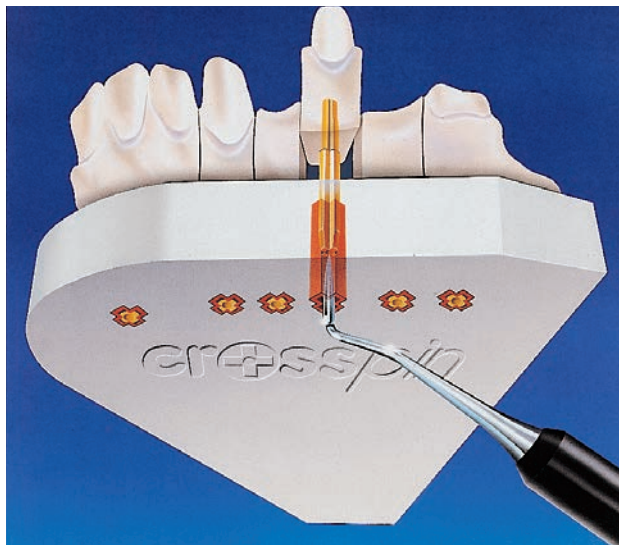
1000 pins and sleeves

**Crosspin**® XL kit:

250 XL pins and sleeves  
1 drill

**Crosspin**® XL refill:

1000 pins and sleeves



**Crosspin XL Crosspin®** is also available in an extra long version XL total length 21 mm which corresponds in length with most ordinary Dowel-pins. These XL Crosspin® are intended to be used with other model former systems such as Vertex® and others. The longer XL Crosspin® is also a little bit more stable than the ordinary Crosspin®.



**1**  
*Plaster-cast made from impression of patient.*



**2**  
*Cut, shape and flatten bottom surface of cast.*



**3**  
*Drill parallel holes, one under each section to be separated and removed.*



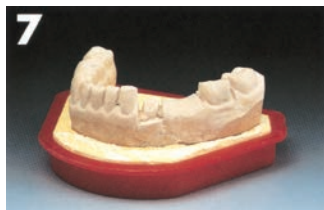
**4**  
*Introduce cylindrical section of Crosspin in predrilled hole and fix with "cyano" glue.*



**5**  
*Put red sleeve over cross-shaped part of pin.*



**6**  
*Put model with pins down into Crosspin model-former.*



**7**  
*Cast model base in plaster, using a reliable model insulator liquid.*



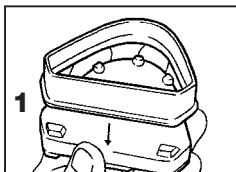
**8**  
*Remove model-former from base. Cross-shaped section glide in the sleeves which stay in the base. Bottom part of pins is readily accessible for pushing due to corresponding depth of model-former and length of pin.*



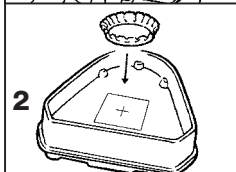
**9**  
*Separate desired section by sawing. Sections can be removed and replaced with the utmost precision.*

**crosspin®**

# Mounting System MK II

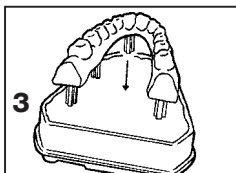


1



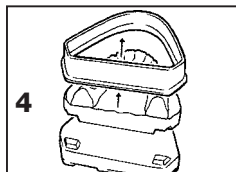
2

Place frame on mounting plate and put a cap in centre of plate where magnet is located. Insulate plate and frame with silicone spray or other oily substance.



3

Fill plate and frame with plaster and insert the model into it with the pins downwards.



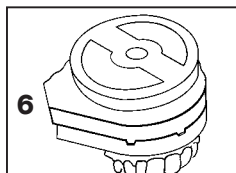
4

Remove frame from model and remove model from mounting plate.



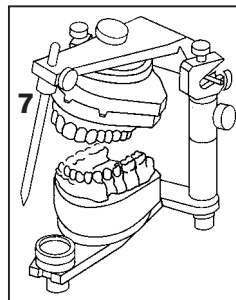
5

The model with the cap incorporated in the base will now fit exactly onto the mounting plate and can be taken off and replaced with total precision.



6

Articulate, using plaster.



Shows the articulated model.



**Crosspin Mounting Intro-Kit:**

- 2 Model frames
- 2 Mounting plates
- 50 Metal caps
- All items available separately

08-100



## Peeso Reamer

## Gates Reamer

Peeso	Gates		
02-500	02-600	RA 28mm Assortment No 1-6	6 Reamers
02-501	02-601	RA 28mm Refill No 1	6 Reamers
02-502	02-602	RA 28mm Refill No 2	6 Reamers
02-503	02-603	RA 28mm Refill No 3	6 Reamers
02-504	02-604	RA 28mm Refill No 4	6 Reamers
02-505	02-605	RA 28mm Refill No 5	6 Reamers
02-506	02-606	RA 28mm Refill No 6	6 Reamers
02-510	02-610	RA 32mm Assortment No 1-6	6 Reamers
02-511	02-611	RA 32mm Refill No 1	6 Reamers
02-512	02-612	RA 32mm Refill No 2	6 Reamers
02-513	02-613	RA 32mm Refill No 3	6 Reamers
02-514	02-614	RA 32mm Refill No 4	6 Reamers
02-515	02-615	RA 32mm Refill No 5	6 Reamers
02-516	02-616	RA 32mm Refill No 6	6 Reamers

- Swiss Made quality guaranteed
- Inactive tip with guide
- Improved cutting
- Safe: predetermined breaking point at the shank
- Ring coded
- Sterilizable at 200°C/390°F

# NORDIN®

SWISS DENTAL PRODUCTS  
OF DISTINCTION

[www.nordin-dental.com](http://www.nordin-dental.com)

HARALD NORDIN SA  
Z.I. La Foge  
CH-1816 Chailly s/Montreux  
Switzerland

Tel. Int. +41 21 964 71 71  
Fax Int. +41 21 964 71 74  
E-mail: [info@nordin-dental.com](mailto:info@nordin-dental.com)

Bank: Credit Suisse  
CH-1800 Vevey – Switzerland  
Account N° 965437-21

TOTAL QUALITY CERTIFICATION		
ISO 9001	EN 13485	CE 0120