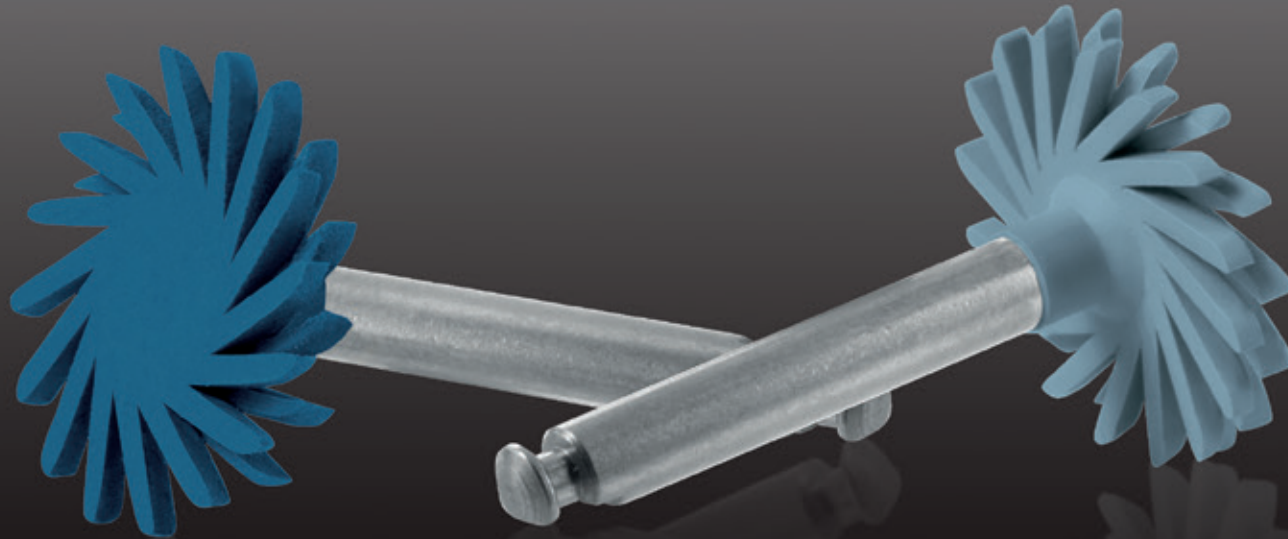


kuraray

Noritake



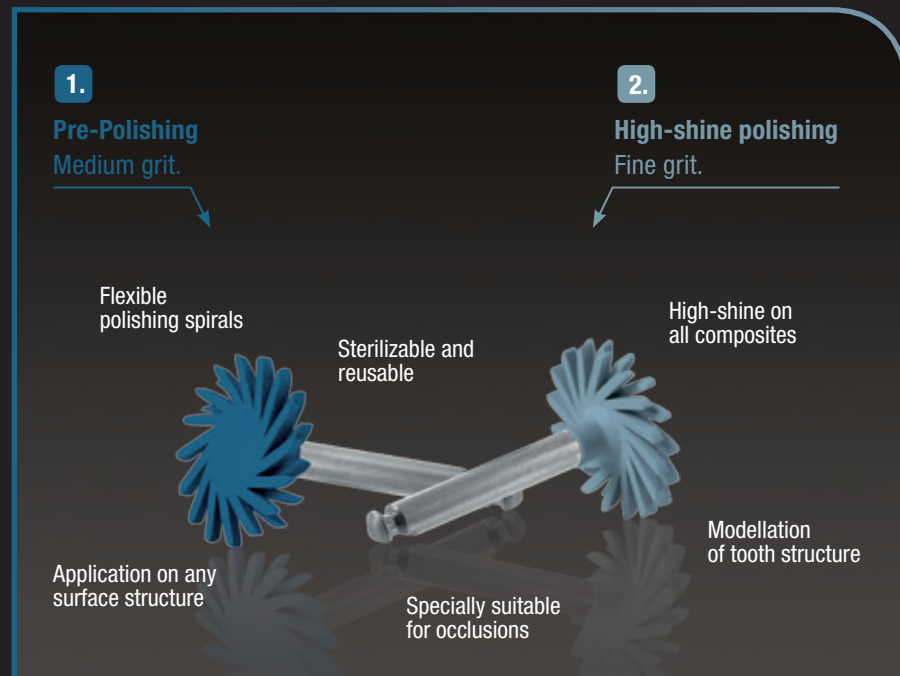
**A NATURAL GLOSS
IN ONLY 2 STEPS**

CLEARFIL™ Twist DIA

THE EASIEST WAY TO CREATE NATURAL GLOSS.

Create a natural gloss with just one polisher pair. Suitable for all surfaces – and reusable. CLEARFIL™ Twist DIA changes all your existing polishing procedure into just one. From flat to even occlusal surfaces – this polisher pair will do the job for you.

CLEARFIL™ Twist DIA is indicated for all composites. The pre-polisher creates the smooth form you like from any angle imaginable. With the high-shine polisher you finish with a natural gloss result in seconds. Additionally, CLEARFIL™ Twist DIA is reusable by constant release of diamond grains.



How is this possible? It's the special shape, of course. And only pure diamonds are inside. The strong diamond-rubber connection makes it reusable for multiple times. The constant release of new diamond grains gives you a great result several treatments.

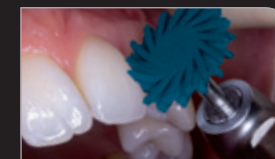
Just try it – and you'll be surprised how simple your polishing procedure can actually be!



occlusal



incisal



labial



buccal



lingual



approximal

YOUR CONTACT

Kuraray Europe GmbH
BU Medical Products
Philipp-Reis-Strasse 4
65795 Hattersheim am Main
Germany

Phone DACH: +49 (0) 69-305 35 835
Phone Rest of Europe: +49 (0) 69-305 35 980
Fax: +49 (0) 69-305 98 35 835
E-Mail: dental.eu@kuraray.com
Website: www.kuraraynoritake.eu