

 KATANA™ AVENCIA™ Block

Homogeneous Nano-structure
Superior Polishability
Wear resistant



PRECISION, STRENGTH AND POLISHABILITY

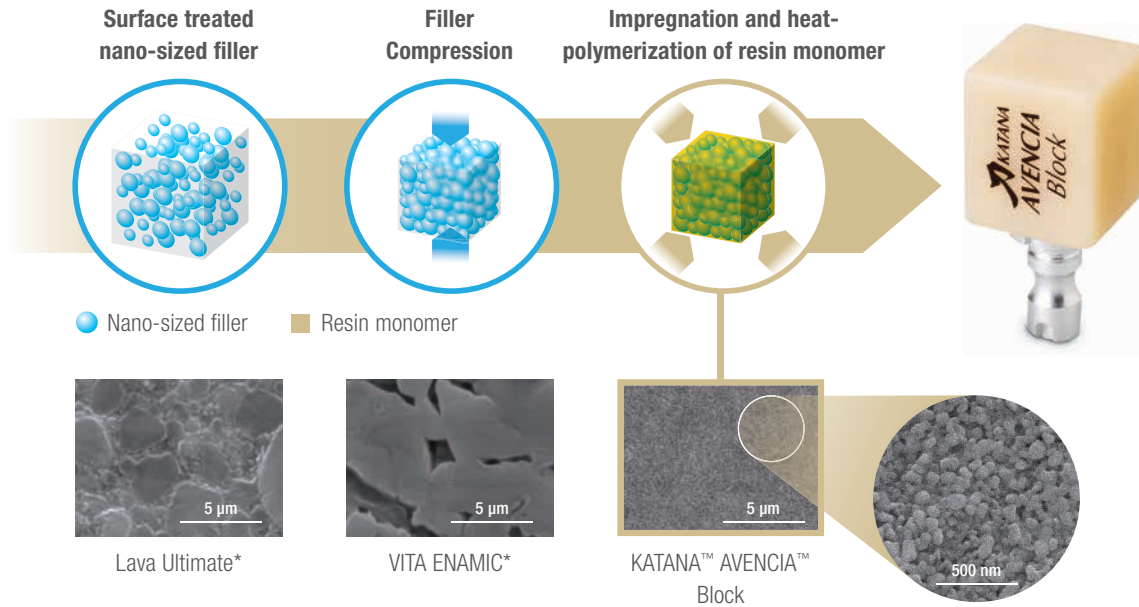
INNOVATION THAT YOU CAN EMBRACE

KATANA™ AVENCIA™ Block is a new type of hybrid ceramic developed bringing together the organic/inorganic technology and experience that we have gained through long years developing and working with restorative materials.



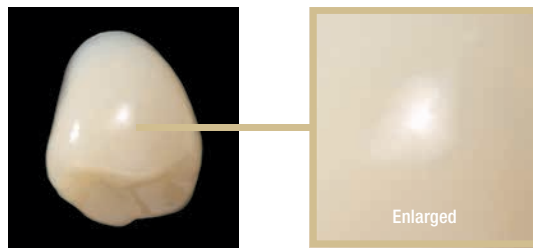
PRODUCED BY AN INNOVATIVE MANUFACTURING METHOD

KATANA™ AVENCIA™ Block is produced using our unique manufacturing method. The nano-sized fillers are densely compressed into a block, which is then uniformly impregnated with resin monomer. The resin is then polymerized by heat. Our new type of hybrid ceramic has great mechanical strength as well as excellent gloss retention.

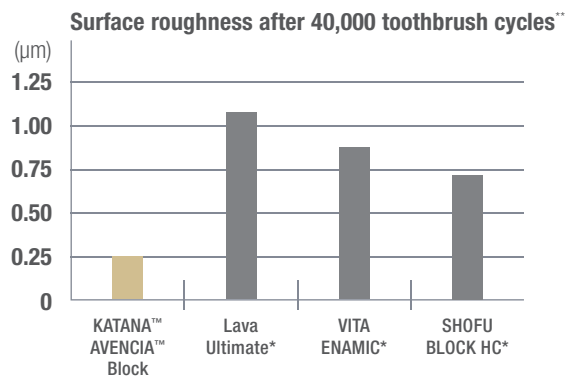


SUPERIOR POLISHABILITY AND POLISH RETENTION

Photos of KATANA™ AVENCIA™ Block after polishing



SUPERIOR POLISHABILITY AND POLISH RETENTION



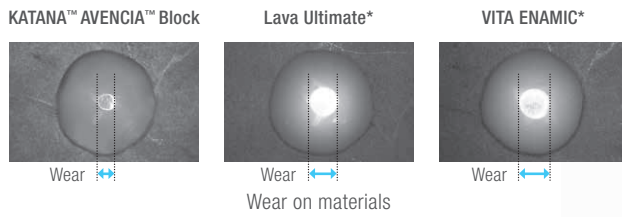
Photos of KATANA™ AVENCIA™ Block before and after 40,000 toothbrush cycles



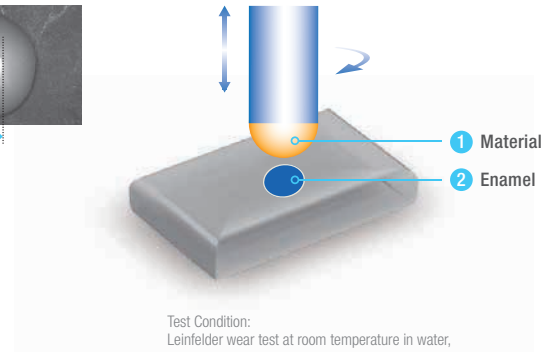
*Not a trademark of Kuraray Noritake Dental Inc. Source: Kuraray Noritake Dental Inc. ** Test Condition: Tooth brush wear test using tooth paste. Load: 250 g. Source: Kuraray Noritake Dental Inc. SEM photos show the microstructure of KATANA™ AVENCIA™ Block, in a comparison with other materials. KATANA™ AVENCIA™ Block is filled densely and uniformly with only nano-sized filler.

EXCELLENT WEAR RESISTANCE AND KIND TO OPPOSING ENAMEL

1 Excellent wear resistance

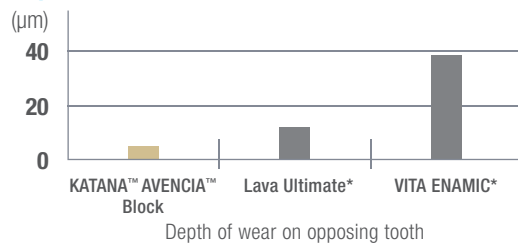


Wear Test



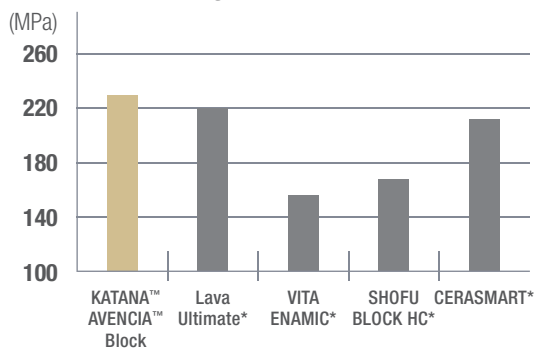
Test Condition:
Leinfelder wear test at room temperature in water,
Load: 15.6 kg/cm², 10.000 cycles.
Antagonist: bovine enamel, polished with #1000 paper
Material: polished with #3000 paper
Source: Kuraray Noritake Dental Inc.

2 Gentle to opposing tooth



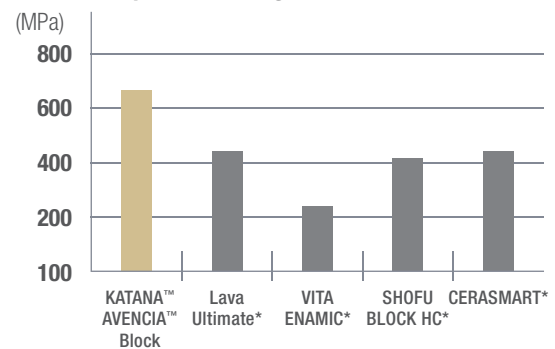
SUPERIOR MECHANICAL PROPERTIES

Flexural Strength



Test Condition: ISO 10477

Compressive Strength



Test Condition: Specimen size 3 x 3 x 3 mm, Immersed at room temperature in water for 24 hours

RECOMMENDED INDICATIONS AND APPLICATIONS



Inlay-Onlay

Pre-molar crown

Anterior crown

Posterior crown

3-unit bridge

KATANA™ Zirconia Block

KATANA™ AVENCIA™ Block

12Z / 14Z

14Z L

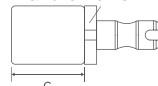
SIZE AND SHADE SELECTION

Block Size

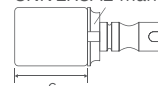
	a (height)	b (width)	c (length)
12	10 mm	12 mm	15 mm
14L	14.5 mm	14.5 mm	18 mm



mandrel for CEREC



UNIVERSAL mandrel



Shades



A2 LT

A3 LT

A3.5 LT

* Not a trademark of Kuraray Noritake Dental Inc.
Source: Kuraray Noritake Dental Inc.

FINISHING

Reliable adhesion for KATANA™ AVENCIA™

Reliable bonding of KATANA™ AVENCIA™ Block can be attained by using PANAVIA™ V5 or PANAVIA™ SA Cement Universal, which is the latest addition to PANAVIA™ family.

PANAVIA™ V5

CLEARFIL™ CERAMIC PRIMER PLUS utilized for the restoration in PANAVIA™ V5 system contains silane coupling agent and MDP. This chemistry makes it suitable for the pretreatment of hybrid ceramic restorations including KATANA™ AVENCIA™.



PANAVIA™ V5 procedure



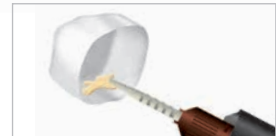
Blast with alumina powder.



Apply CLEARFIL™ Ceramic Primer Plus and dry.



Apply PANAVIA™ V5 Tooth Primer, leave for 20 seconds and dry by mild airflow.



Apply PANAVIA™ V5 Paste to the crown.



Light cure for 3-5 seconds.



Remove the excess cement.

OR



Remove excess cement with a small brush.



Light-cure the margin and maintain isolation for 3 minutes.

PANAVIA™ SA Cement Universal

PANAVIA™ SA Cement Universal is a forerunner in self-adhesive resin cements that adheres virtually to all materials without any primer. The original silane coupling agent, LCSi monomer, incorporated in the paste creates a strong chemical bond to hybrid ceramic restorations including KATANA™ AVENCIA™. CLEARFIL™ Universal Bond Quick can be used on the tooth structure with PANAVIA™ SA Cement Universal to enhance the bond strength.



PANAVIA™ SA Cement Universal procedure



Blast with alumina powder.



Dispense an equal amount of Paste A & B. Mix Paste A & B for 10 seconds.



Apply the cement to the crown.



Place the crown.



Light-cure for 2 to 5 seconds or let self-cure for 2 to 4 minutes, then remove the excess cement.



Light-cure the margin and maintain isolation for 5 minutes.

Refer to the individual IFUs for the full product usage instructions.

ALSO AVAILABLE FOR CEREC

KATANA™ ZIRCONIA BLOCK

COLOR GRADIENT

The multi layered KATANA™ Zirconia Block consists of four layers of zirconia in gradated shades. This product allows the chair side fabrication of natural-tooth-colored restorations – eliminating the time-consuming and difficult process of staining the restoration.



POWERFUL

Delivers better mechanical properties than lithium disilicate glass ceramics

NATURAL

Aesthetic quality mimics natural teeth through enhanced translucency

FAST

Single-visit chairside restorations. 15 min. Milling + 18 min.¹ Sintering

With its Superb Mechanical Properties and aesthetic qualities that mimicing natural teeth, KATANA™ Zirconia Block brings in the best of both worlds. Super Translucent and great Flexural Strength. Resulting in exceptional aesthetics and better mechanical properties than lithium disilicate glass ceramics.

¹ For cases where the wall thickness is less than 6mm using dry milling.

SHADE AND SIZE SELECTION

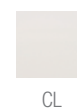
STML

Super Translucent Multi Layered



ST

Super Translucent*



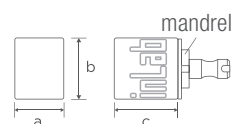
*Available only in 12Z and 14Z sizes

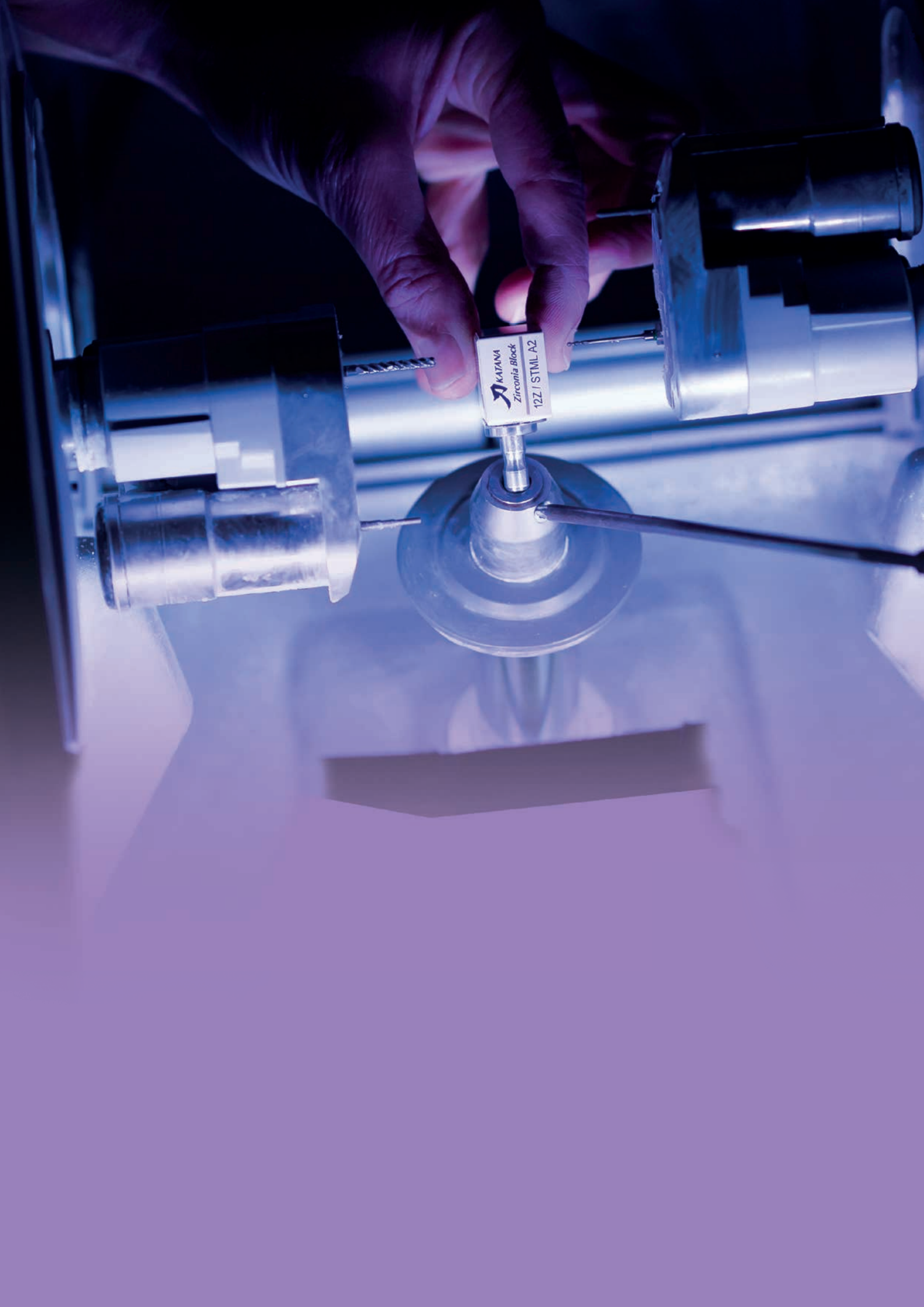
Block Size

		a (height)	b (width)	c (length)
12Z	Before sintering	15.3 mm	19.2 mm	20.2 mm
	After sintering	12.2 mm	15.4 mm	16.2 mm
14Z	Before sintering	17.8 mm	19.2 mm	20.2 mm
	After sintering	14.2 mm	15.4 mm	16.2 mm
14Z L	Before sintering	17.8 mm	19.2 mm	40.0 mm
	After sintering	14.2 mm	15.4 mm	32.0 mm

Other Information

Composition : ZrO₂, Y₂O₃
 Thermal expansion coefficient : 9.8(±0.2)x10⁻⁶/K





KATANA
Zirconia Block
12Z / STML A2

YOUR CONTACT

Kuraray Europe GmbH

BU Medical Products

Philipp-Reis-Strasse 4

65795 Hattersheim am Main

Germany

Website www.kuraraynoritake.eu

Phone +49 (0)69 305 35 835

E-Mail centralmarketing@kuraray.com

- Before using this product, be sure to read the Instructions for Use supplied with the product.
- The specifications and appearance of the product are subject to change without notice.
- Printed color can be slightly different from actual color.

"KATANA" is a trademark of NORITAKE CO., LIMITED.

"AVENCIA", "CLEARFIL" and "PANAVIA" are trademarks of Kuraray Co., Ltd

"CEREC" is a trademark of Dentsply Sirona Inc.



Kuraray Noritake Dental Inc.

1621 Sakazu, Kurashiki, Okayama 710-0801, Japan
Website www.kuraraynoritake.com

